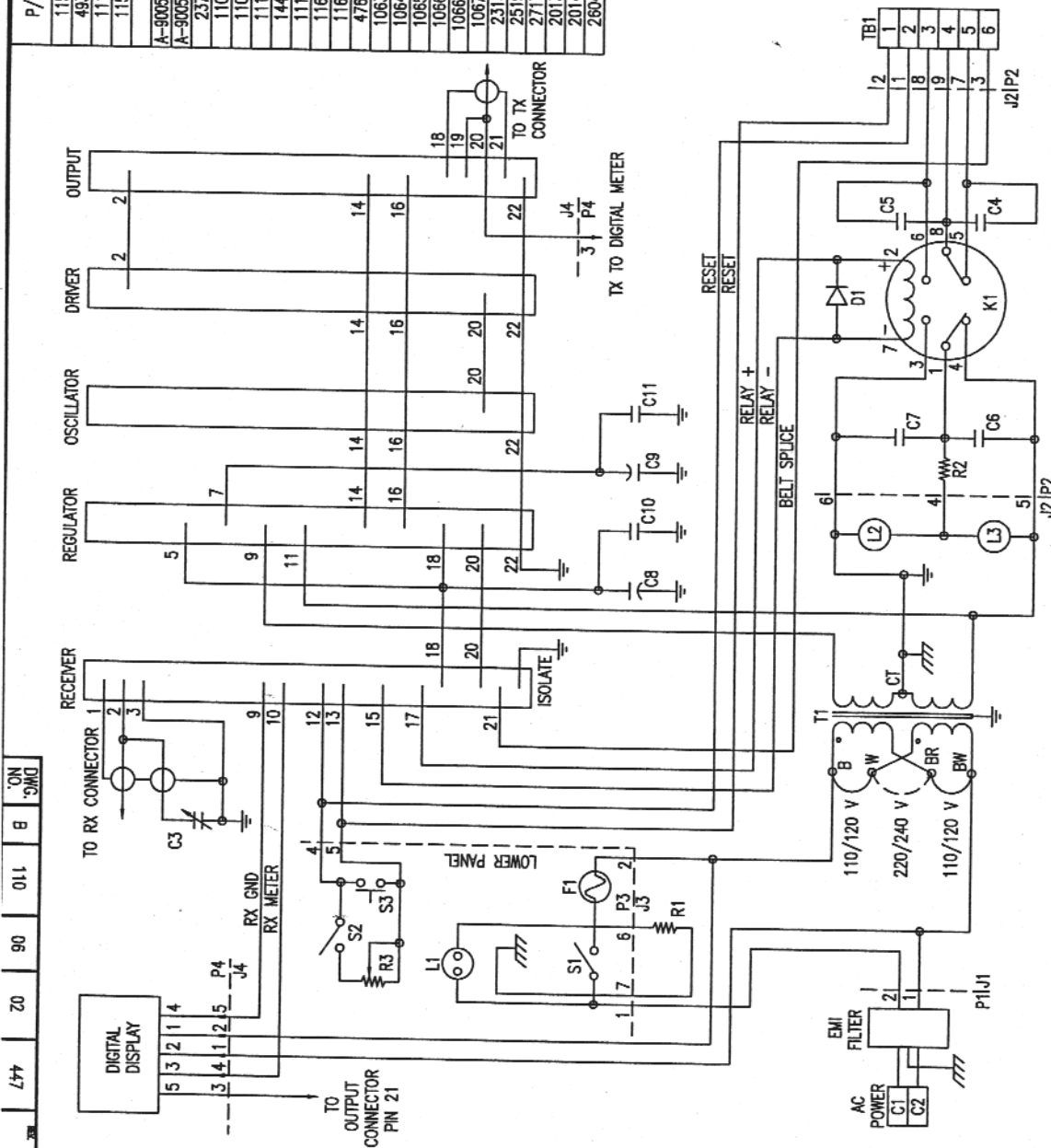


L77 20 90 011 B ON 3MG



P/N	PART	DESCRIPTION
1159	C3	CAPACITOR: 650-1890 pF. MICA; ADJUSTABLE
4933	C3	CAPACITOR C3 ASSEMBLY (WITH LEAD)
1117	C4 - C7	CAPACITOR: 10 nF; 1 KV
1158	C8 & C9	CAPACITOR: 4.7 nF; 50 V; ELECTROLYTIC
	C10 & C11	CAPACITOR: 10 nF; 50 V
A-900569-07	D1	DIODE: 1N4007
A-900568-40	K1	RELAY: 2-SPDT; ICE CUBE COIL; 24 V-dc COIL
2372	L1	LAMP ASSEMBLY: NEON
1104	L2 & L3	LAMP: INDICATOR RED/GREEN (BULB ONLY)
1106	R1	RESISTOR: 68 KΩ; 500 mW
1118	R2	RESISTOR: 27 Ω; 2 W
1447	R3	POTENTIOMETER: 100 KΩ; 2 W; 1 TURN
1110	S1	TOGGLE SWITCH: SPST
1160	S2	TOGGLE SWITCH: SPST
1161	S3	PUSHBUTTON SWITCH: SPST (MOMENTARY)
4768	T1	TRANSFORMER: 120/240 V-in TO 25.2 V-out; 1 A; CT
1063F		DRIVER BOARD
1064F		OUTPUT BOARD
1065F		REGULATOR BOARD
1066F		OSCILLATOR BOARD (STANDARD FREQUENCY)
1066HF		OSCILLATOR BOARD (HIGH FREQUENCY)
1067F		RECEIVER BOARD
2315		DIGITAL DISPLAY PANEL
2519		CHASSIS ASSEMBLY (MOTHERBOARD)
2717		LOWER PANEL ASSEMBLY
2013		CONNECTOR FEMALE: TOP OF CABINET
2014		CONNECTOR MALE: TOP OF CABINET
2604		CONNECTOR: MOTHERBOARD

REV. NO. DESCRIPTION

P/N: 2313F

STEARNS MAGNETICS
 A SUBSIDIARY OF PEERLESS-WINSMITH, INC.
 MAPLE HEIGHTS, OHIO

CONTROL CABINET SCHEMATIC WITH PARTS LIST

NOTICE
 THIS DRAWING IN DESIGN AND DETAIL IS OUR PROPERTY. ALL RIGHTS OF DESIGN OR INVENTION ARE RESERVED. UNLESS OTHERWISE SPECIFIED AS SHOWN, DIMENSIONS SHALL BE IN INCHES. FRACTIONS SHALL BE 1/16, 1/8, 1/4, 3/8, 1/2, 5/8, 3/4, 7/8, 1, 1 1/4, 1 1/2, 1 3/4, 1 7/8, 2, 2 1/4, 2 1/2, 2 3/4, 3, 3 1/4, 3 1/2, 3 3/4, 4, 4 1/4, 4 1/2, 4 3/4, 5, 5 1/4, 5 1/2, 5 3/4, 6, 6 1/4, 6 1/2, 6 3/4, 7, 7 1/4, 7 1/2, 7 3/4, 8, 8 1/4, 8 1/2, 8 3/4, 9, 9 1/4, 9 1/2, 9 3/4, 10.

BY JPS APPROVED DATE 30 OCT 2002

DWG. NO. B 110 06 02 447